

Recycling Performance

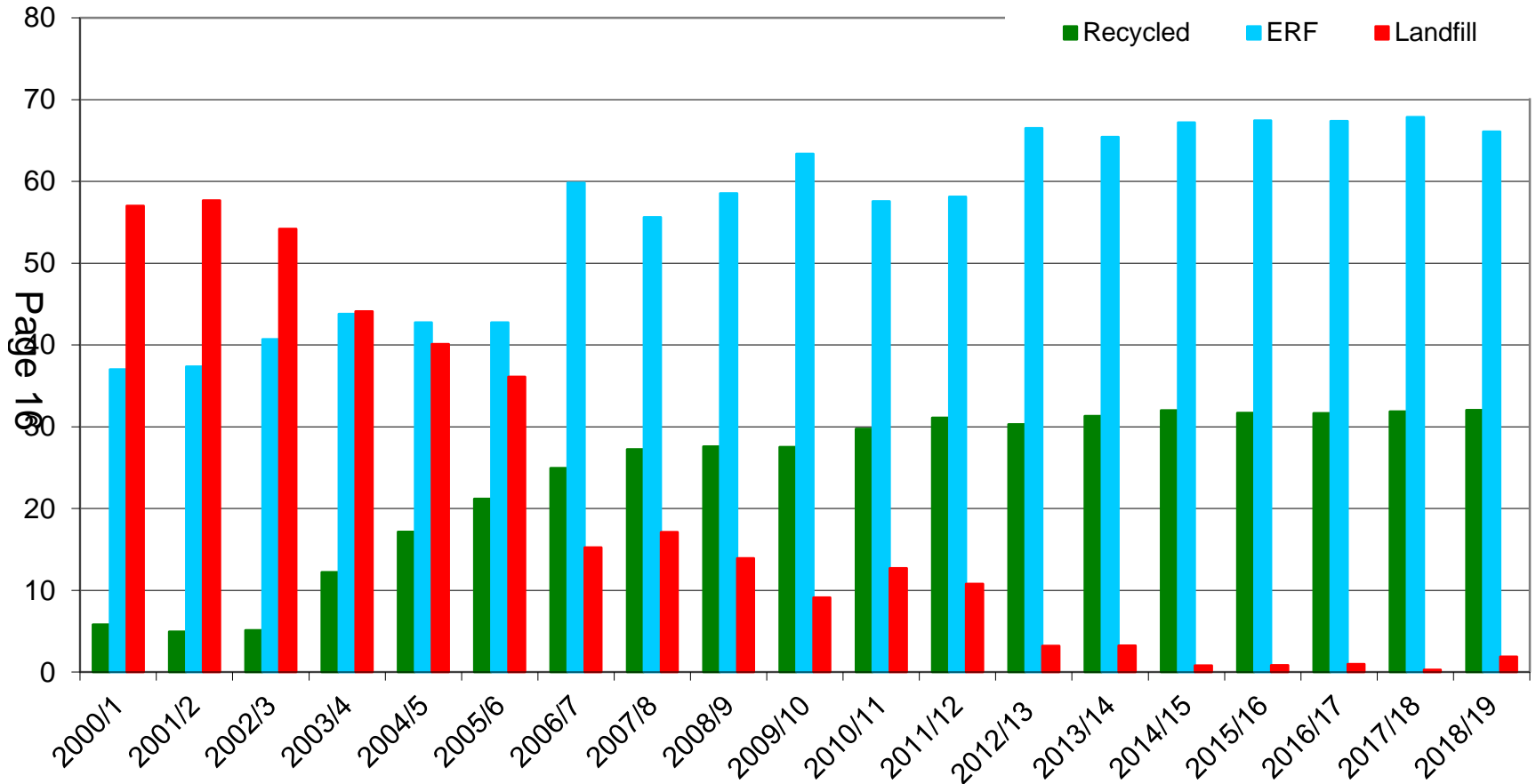
Economic and Environmental Wellbeing Committee
September 2019

Page 15

Agenda Item 7



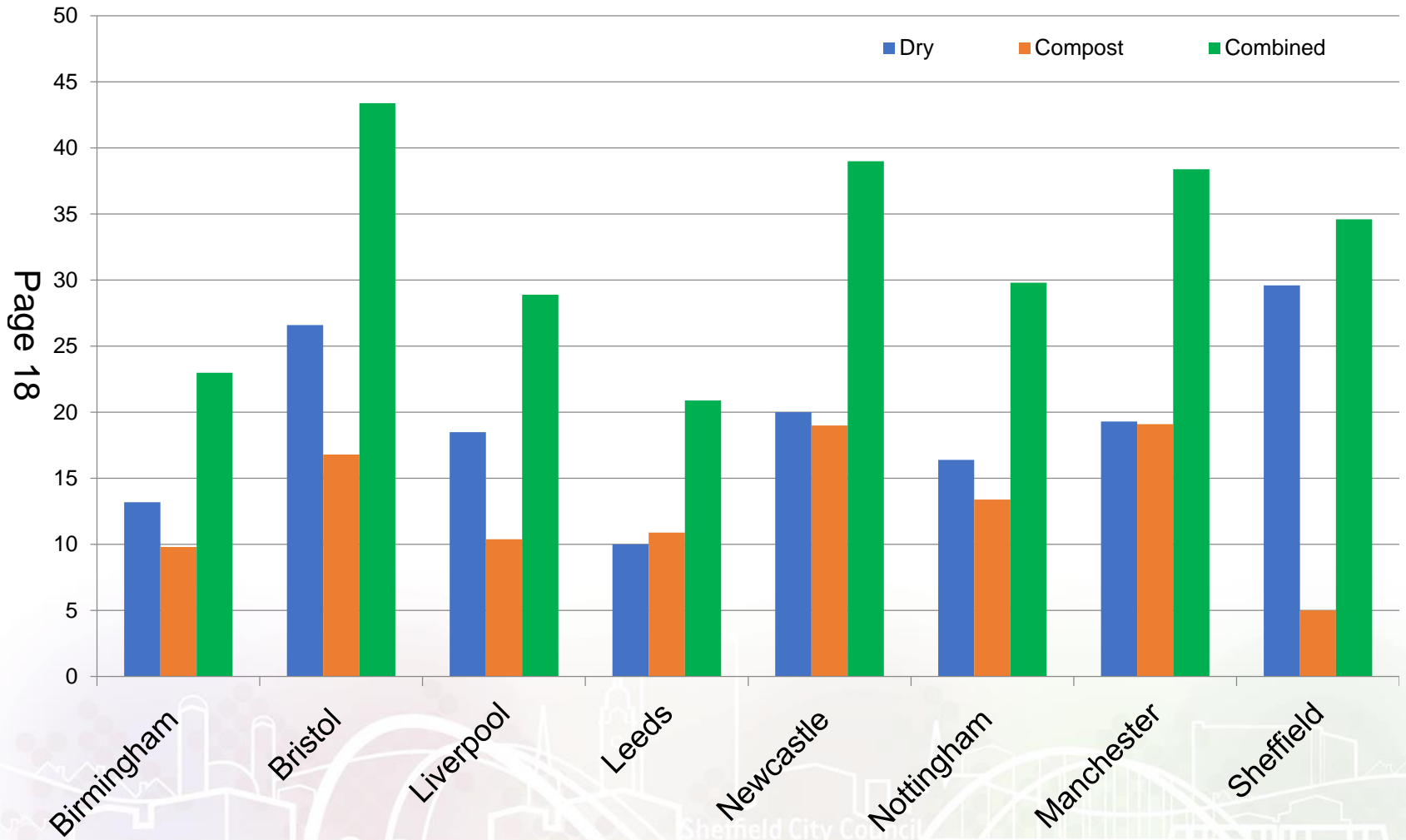
Sheffield Performance from 2001



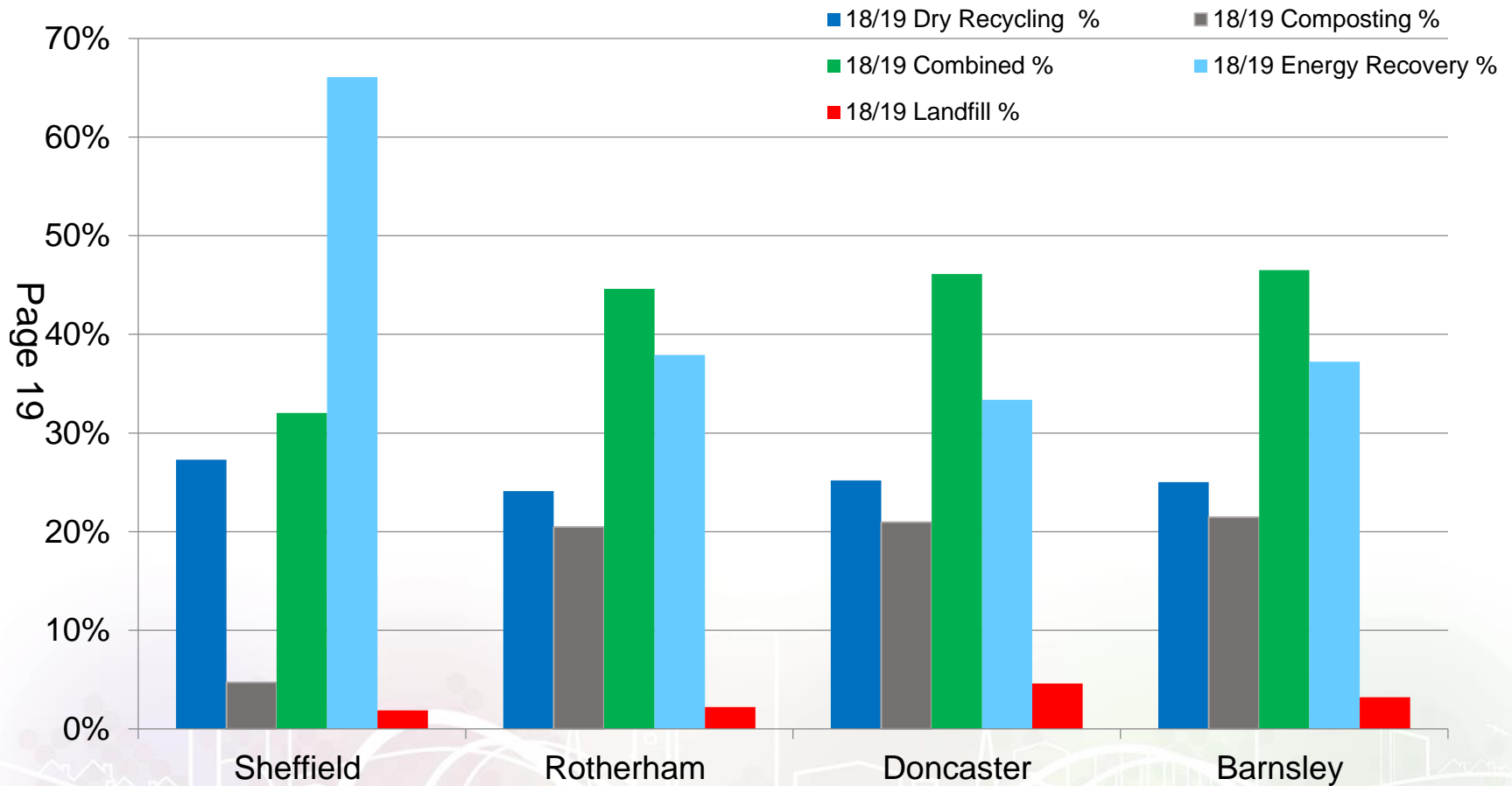
Timeline

Late 90s	Landfill Tax WET Bill Biodegradable waste to landfill allowance to each Council
2001	Veolia commence integrated waste management contract Blue Bin roll out for paper & card
2003/4	Statutory (combined) recycling target 10% Garden waste scheme to 45,000 households
2005/6	Statutory (combined) recycling target 15% (Sheffield stretched to 18%)
2006/7	New ERF commissioned
2010/11	New Blue Box for paper & card, Blue Bin for glass, cans & plastic bottles, collection every 2 weeks Free Garden Waste Collection Service (for non green bin customers) across the City
2012/13	Black Bin - Alternate Week Collections End of Free Garden Waste Collections
2018	New Brown Bin for glass, cans & plastic bottles, Blue Bin for paper & card, each collected every 4 weeks

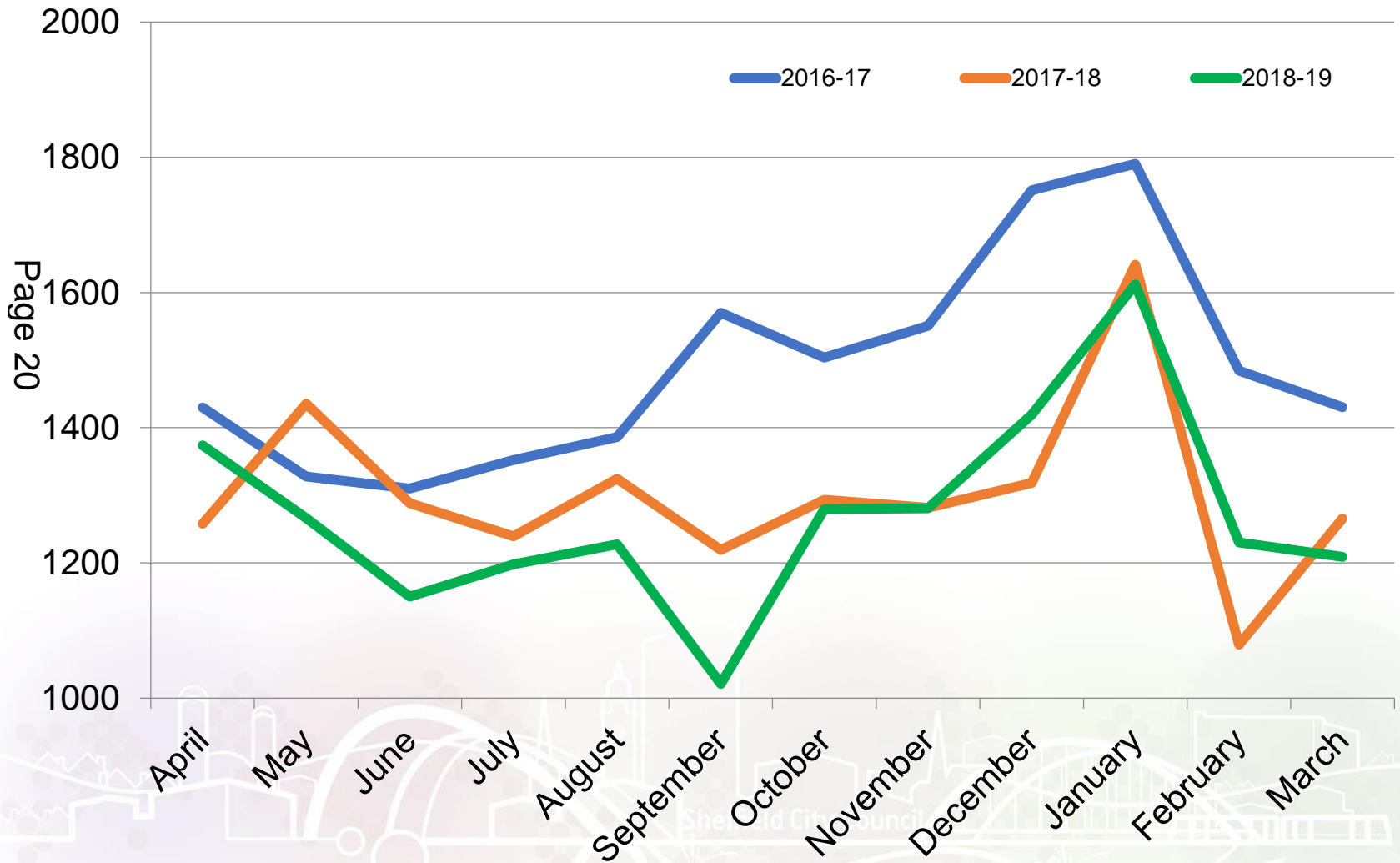
Core Cities Recycling Performance



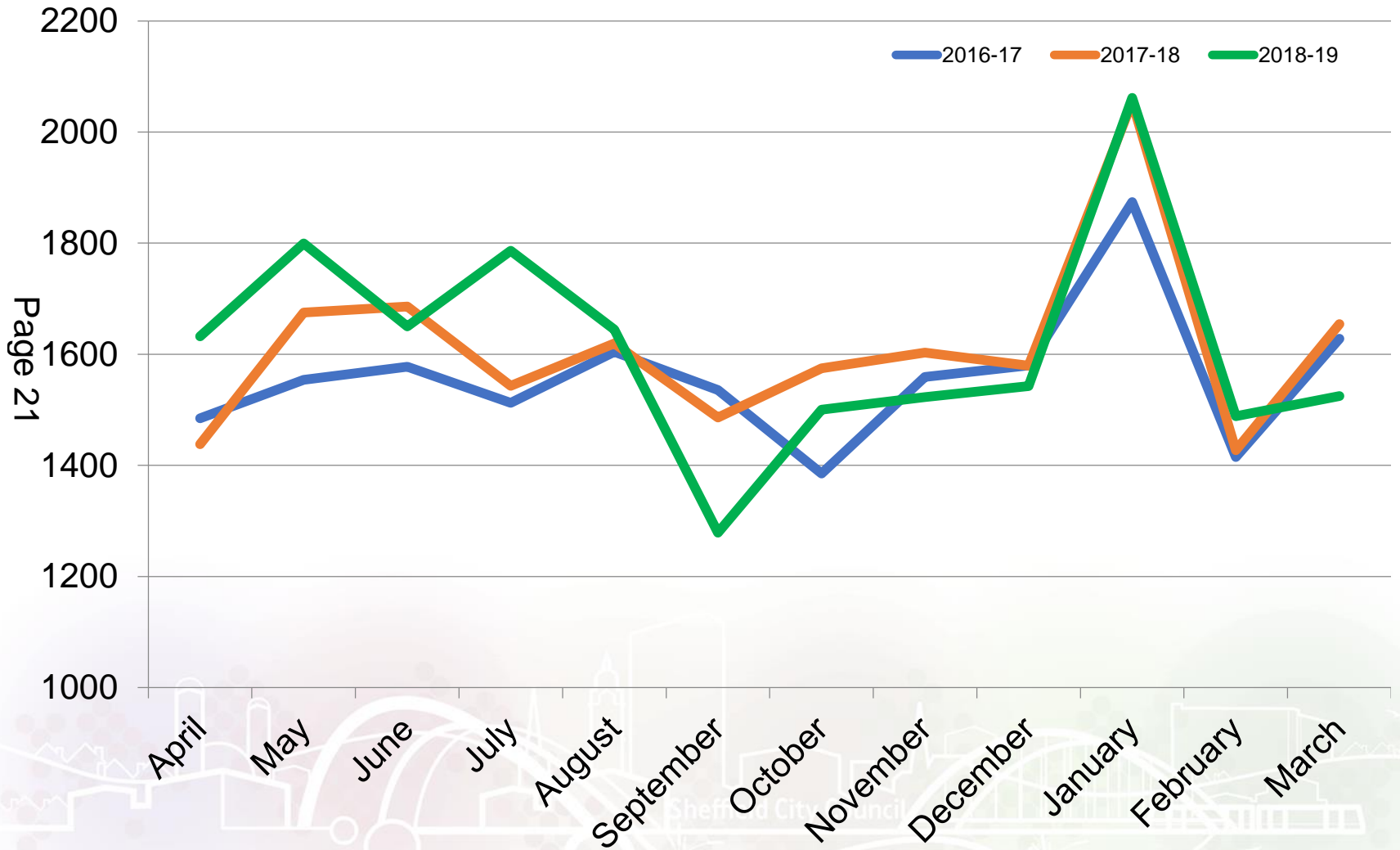
2018/19 South Yorkshire Performance



SCC Paper & Card Collection

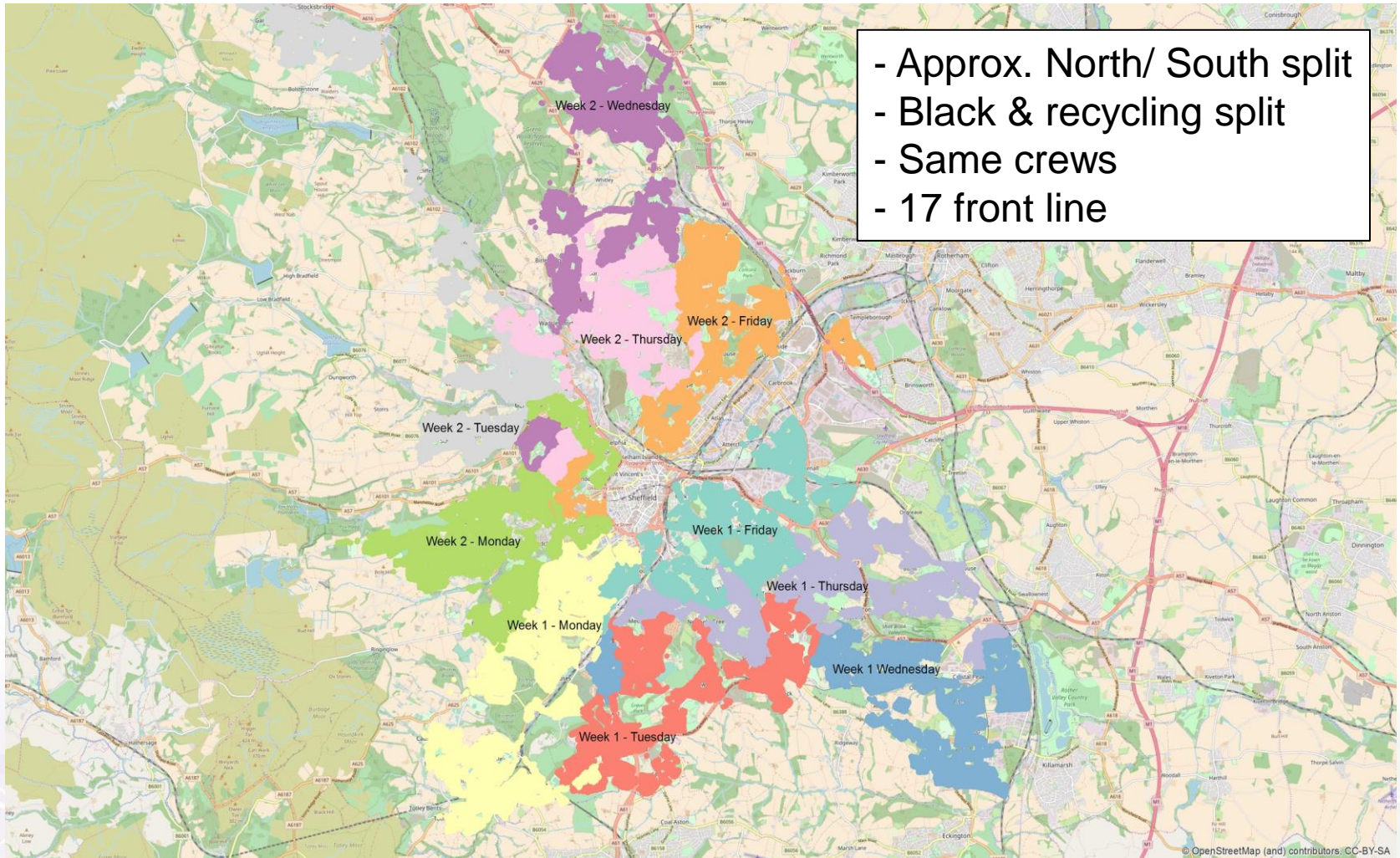


SCC Mixed Dry Recyclables Collection



Scheduled Collections

- Approx. North/ South split
- Black & recycling split
- Same crews
- 17 front line



Sheffield Recycling Range

Kg's Per Household			
	Paper & Card	MDR	Total
Whole City Average	38.39	56.92	95.31
Whole City Highest	80.71	82.96	157.75
Whole City Lowest	15.94	30.09	52.35

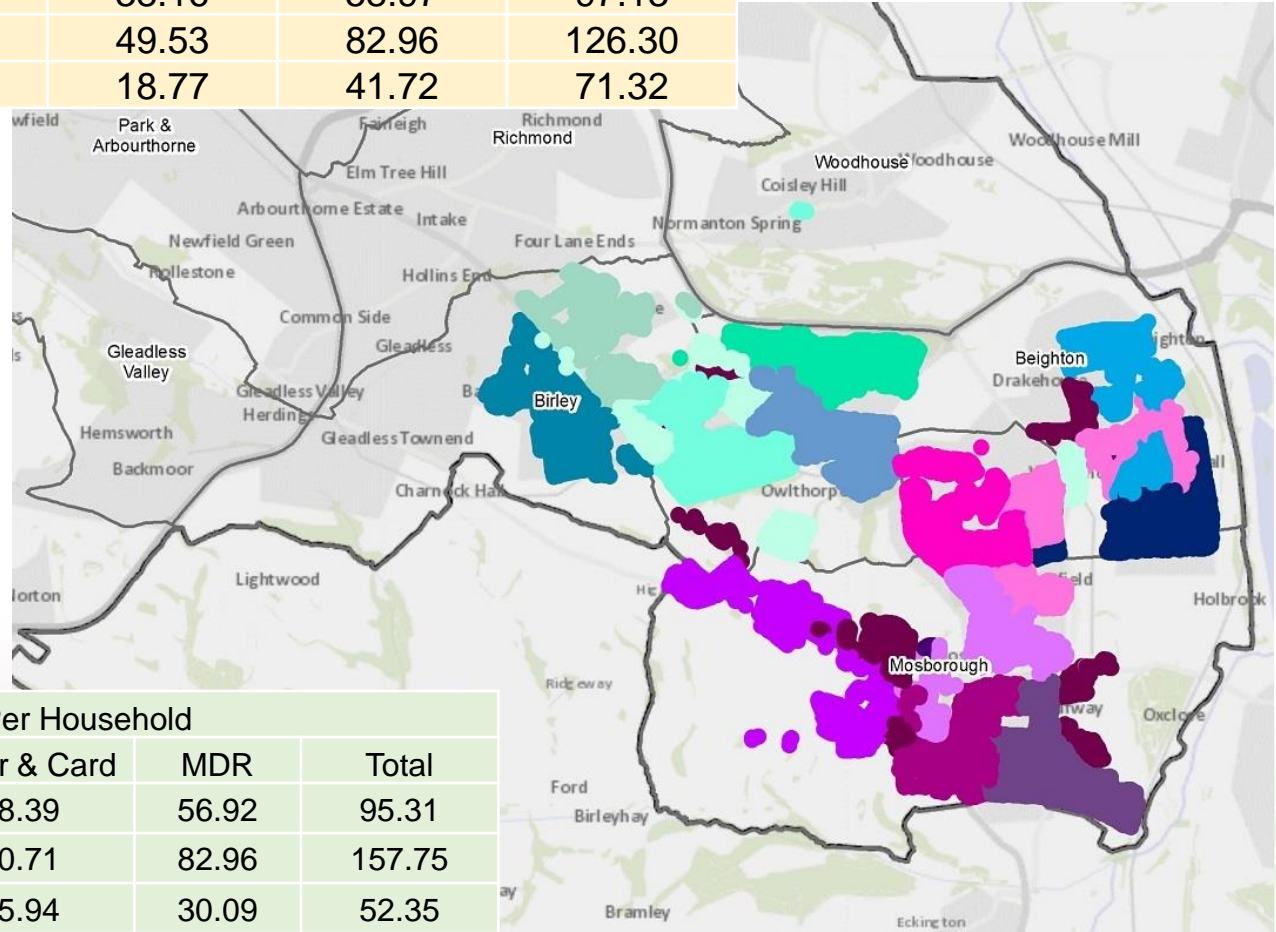
Target Area: Wednesday

KG's Per Household

	Paper & Card	MDR	Total
Collection Day Average	38.16	58.97	97.13
Collection Day Highest	49.53	82.96	126.30
Collection Day Lowest	18.77	41.72	71.32

Target Waste Stream
Mixed Dry Recycling

Page 24

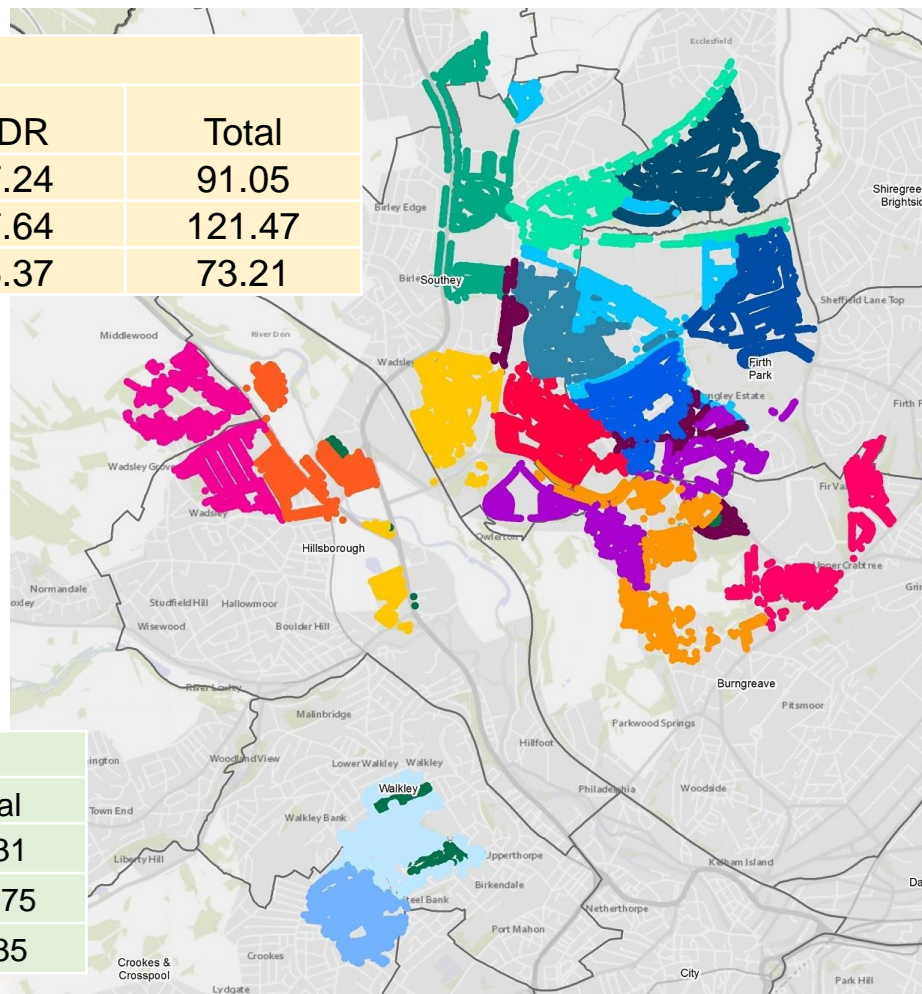


KG's Per Household

	Paper & Card	MDR	Total
Whole City Average	38.39	56.92	95.31
City Highest Round	80.71	82.96	157.75
City Lowest Round	15.94	30.09	52.35

Target Area: Thursday

KG's Per Household			
	Paper & Card	MDR	Total
Thursday North Average	33.81	57.24	91.05
Highest	46.46	77.64	121.47
Lowest	22.89	46.37	73.21



Target Waste Stream
Paper & Card

Page 25

KG's Per Household			
	Paper & Card	MDR	Total
Whole City Average	38.39	56.92	95.31
City Highest Round	80.71	82.96	157.75
City Lowest Round	15.94	30.09	52.35

Horizon Scanning

HM Government

OUR WASTE,
OUR RESOURCES:
A STRATEGY FOR
ENGLAND

Single Use Plastic Tax – minimum 30% threshold for recycled content, includes imported material

Waste Collection Consistency

Mandatory:

- Food waste collection
- Glass, cans, paper, card & plastics recycling collection
- Preference for box sort
- Standard container colours
- No less than alternate week black collection
- Free garden waste

Extended Producer Responsibility

Producer Pays Principle

- Approved materials
- Brand owner/ retailer
- Business obligated
- Mandatory labelling
- Funding back to Las
- Communication costs
- Litter & fly tipping costs
- Governance Scheme
- Options (separate household/ commercial)

Deposit Return Scheme

All In / On The Go

- Up to 750ml or Up to 3 litre bottles
- All drinks but not milk
- Not coffee cups
- Glass, cans & plastic bottles
- Deposit Management Organisation